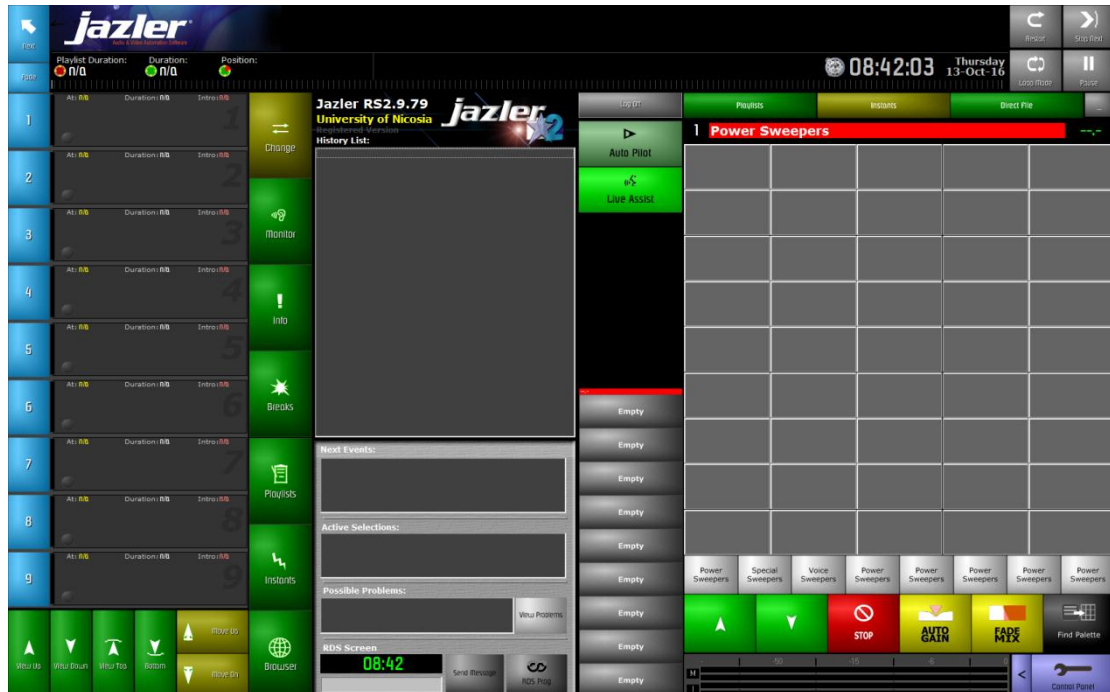


# Jazler RS2 Studio Basic Tutorial

13/10/2016



## Add music to Songs Database

1. Click on the **Control Panel**.
2. Click **Songs Database** under **Databases** tab (Image 1).

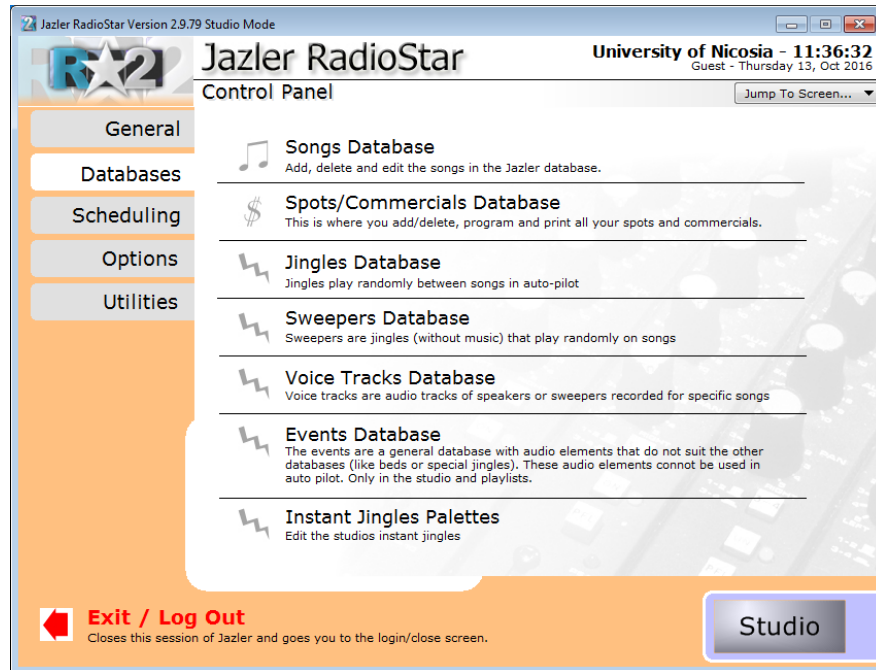


Image 1

3. A window will open allowing you to **Add** and manage the songs (Image 2).

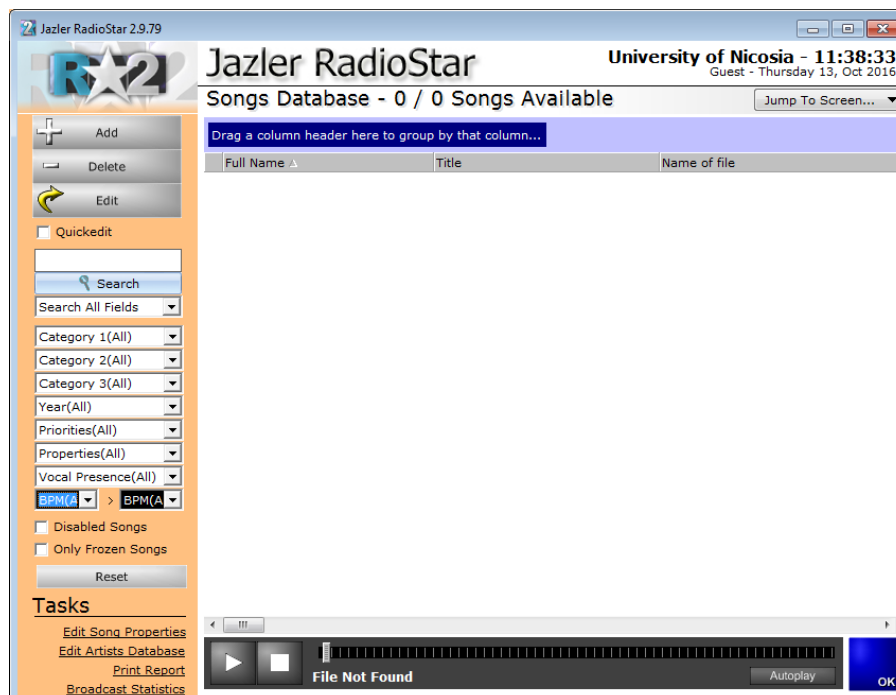


Image 2

4. Click on the **Add** button.

5. The **Import New Song(s) Wizard** will open (Image 3). If you select **Import one song** then jump to step 12.

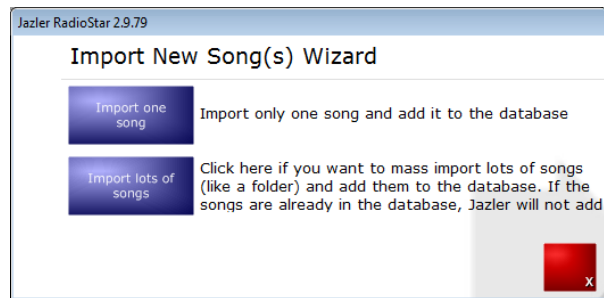


Image 3

6. Select **Import lots of songs**.

7. Specify the location of your Audio files (Image 4) and click on **Start Search**.

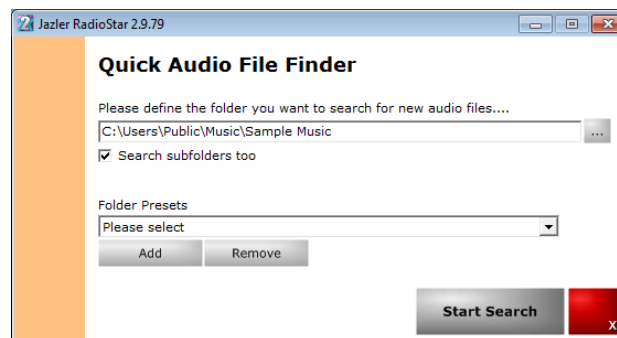


Image 4

8. A window will appear where you can preview and listen to the audio files (Image 5). Click **Next >>**

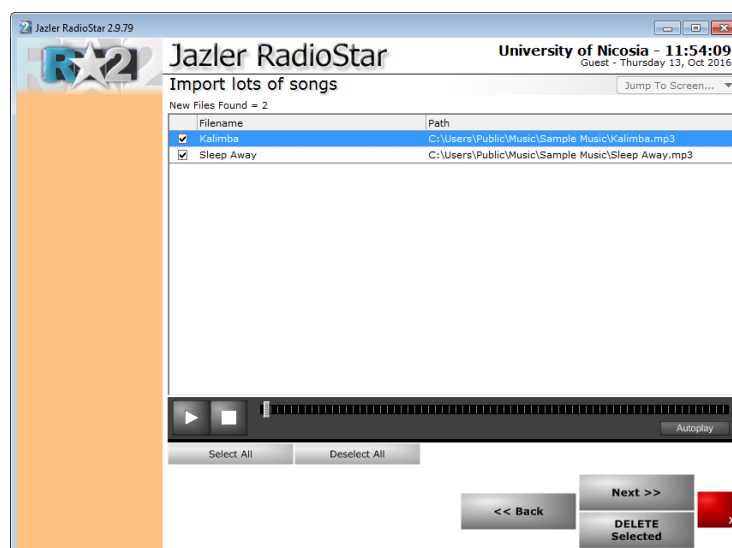


Image 5

9. In the next window (Image 6) you can categorize all songs. Select a category and click **Next** >>

Image 6

10. Click **Start Import** on the new window (Image 7) to proceed.

Image 7

11. And then **OK** (Image 8).

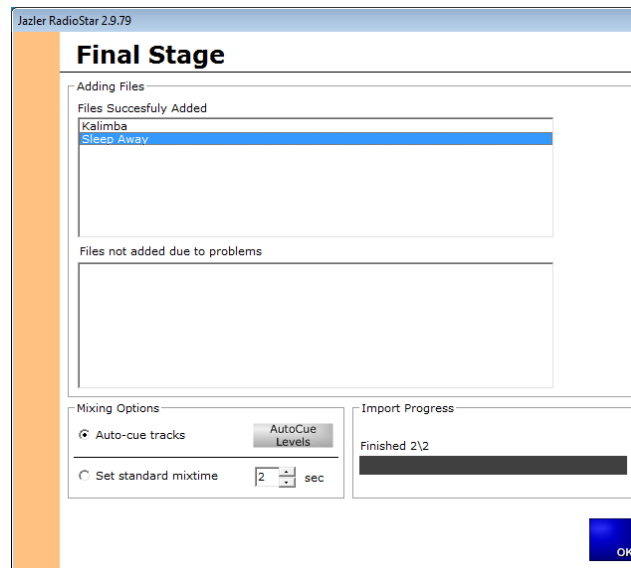


Image 8

12. You can see that the songs you have imported are in the list (Image 9).

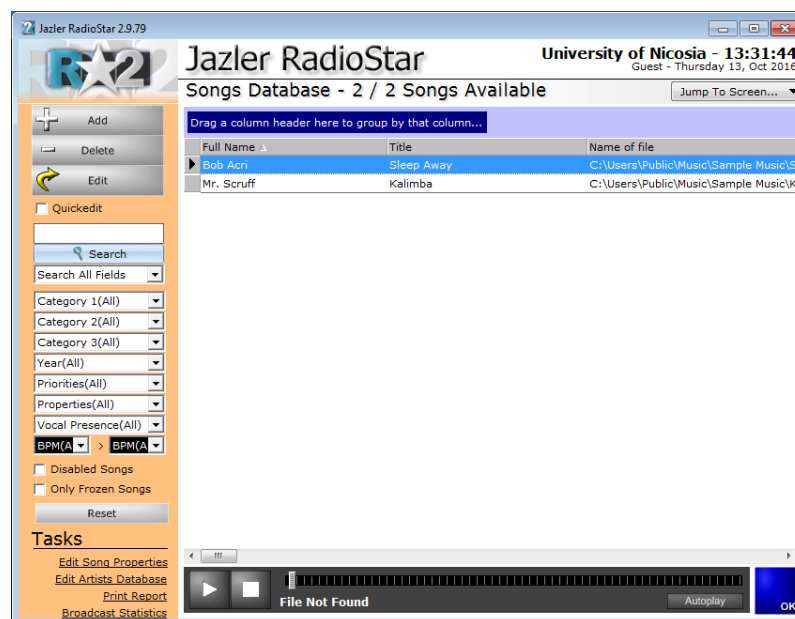


Image 9

13. If you double-click on any of the songs you can change the songs properties.

14. Click **OK** to go to the main **Control Panel** screen.

15. Click **Studio** to go to the Studio interface.

## Creating a Playlist

1. Click Playlist Programming under Scheduling tab (Image 10).

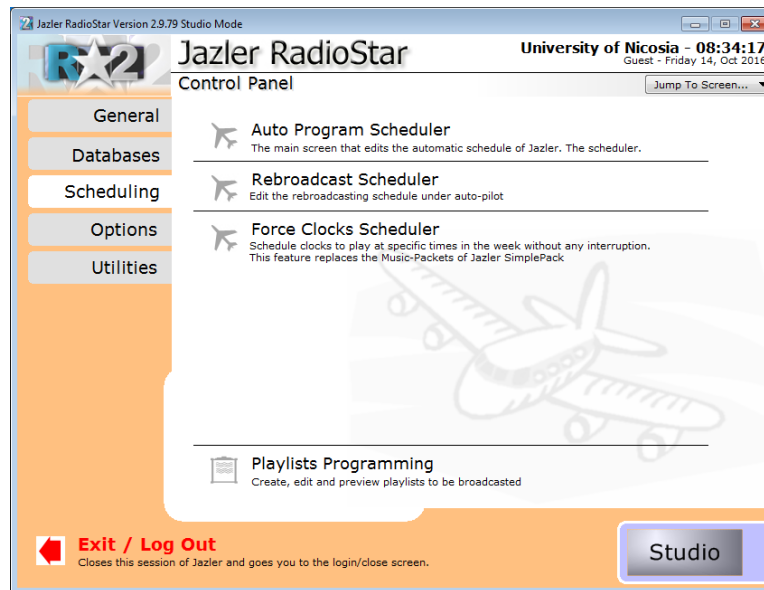


Image 10

2. Click Add on the left side and insert a name for your playlist (Image 11).

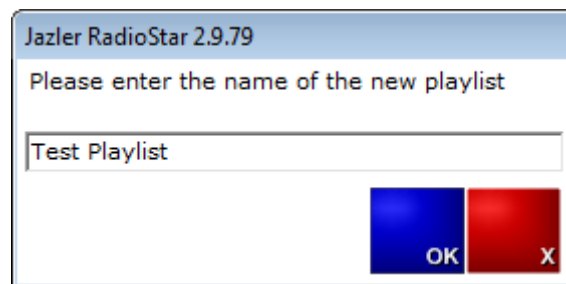


Image 11

3. You can add Songs, Jingles, Spots, etc. to your playlist by double clicking on the song. One you do this you will notice that the song gets added to the playlist in the left (Image 12).



Image 12

5. You can make adjustments to the playlist, like ordering.
6. Notice the **Playlist Duration** on the top left corner.
7. Then click **Exit** to close the window and then **OK** to go to the **Control Panel**.

## Inserting a Playlist to Sequence List

1. Sequence List displays the upcoming tracks to be played (Outlined with red in Image 13).



Image 13

2. Click on the Playlist button (Outlined with yellow in Image 13).

3. Select your Playlist and click Add (Image 14).

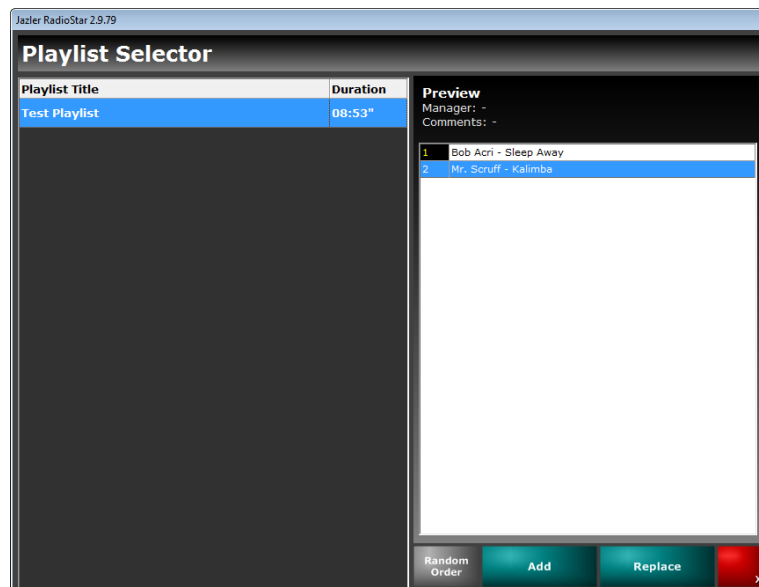


Image 14

4. You will notice that your Playlist is loaded into the Sequence List (Image 15).



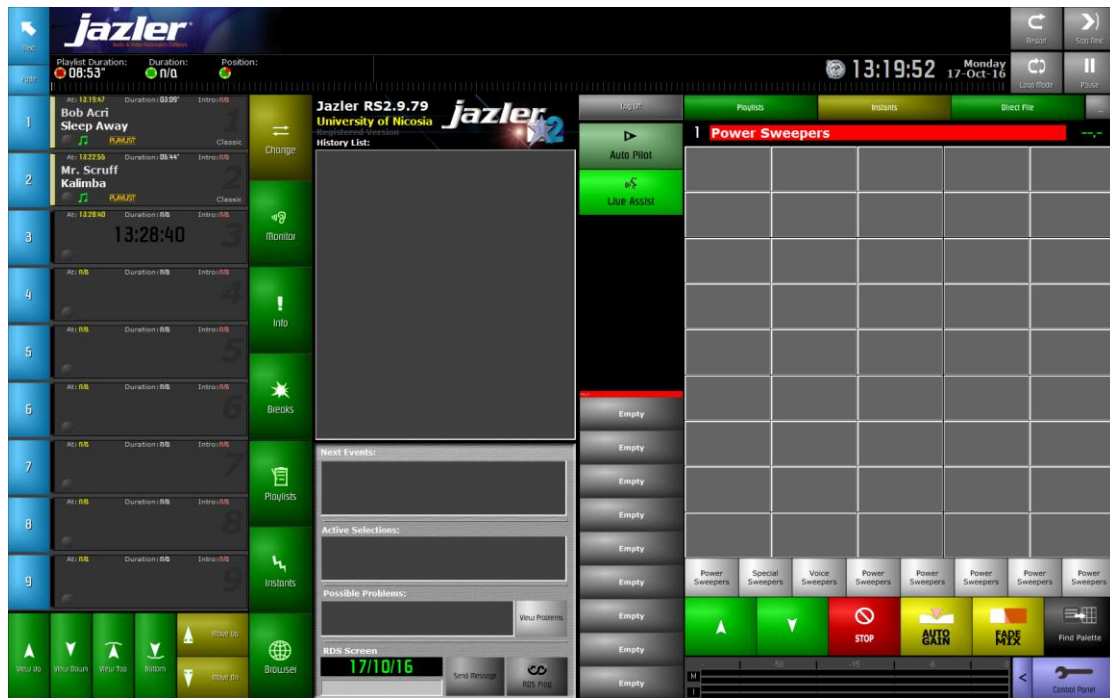


Image 15

## Controlling the Sequence List



Image 16

**Status buttons** (Outlined with red in Image 16): Those buttons give you the ability to control the status of the track which is been currently broadcasted **on-air**.

- **Restart** in order to play the track from the beginning
- **Loop Mode** and the track broadcasted “on-air” will play repeatedly.
- **Stop Next** and when the track reaches its end, broadcasting will stop (for example you may use this button if you want to speak without any music bed in the background or if you want to play something from a different source such as a cd player etc.).
- **Pause** in order to temporary pause the broadcasted track. If you click it for a second time the track will continue broadcasting on-air from the exact point where it was previously paused.

**Upcoming track buttons** (Outlined with yellow in Image 16): You may use those buttons so as to preview the tracks of the next positions in the playlist.

- **View Up** or **View Down** to move up or down the list
- **View Top** or **Down** to move to the first or the last track of the list respectively.
- **Move Up** or **Move Down** in order to change the sequence of the tracks in the list, which are about to be broadcasted.

**Coming up lists buttons** (Outlined with purple in Image 16): Those buttons represent the upcoming tracks (such as songs, jingles, spots etc.). Click on the **Next** button in order to play the track in position number 1. If you wish to play a track, no matter what its position in the list, just click the button with the number next to it. Click **Fade** and Jazler RS2 will fade out

(for about 4-5 sec.) the volume of the broadcasted track and mix with the track in position number 1.

### Clearing the Sequence List

1. In the Studio Panel click on the **Live Assist** button (Outlined with orange in Image 16).
2. On the window that it will pop-up, click on the **START LIVE NOW** (Image 17).



Image 17

3. This action will clear the sequence list.

### Exit Jazler RS2

1. Go to **Control Panel**
2. Click on **Exit/Log Out**
3. Click on **Terminate Jazler** (Image 18).

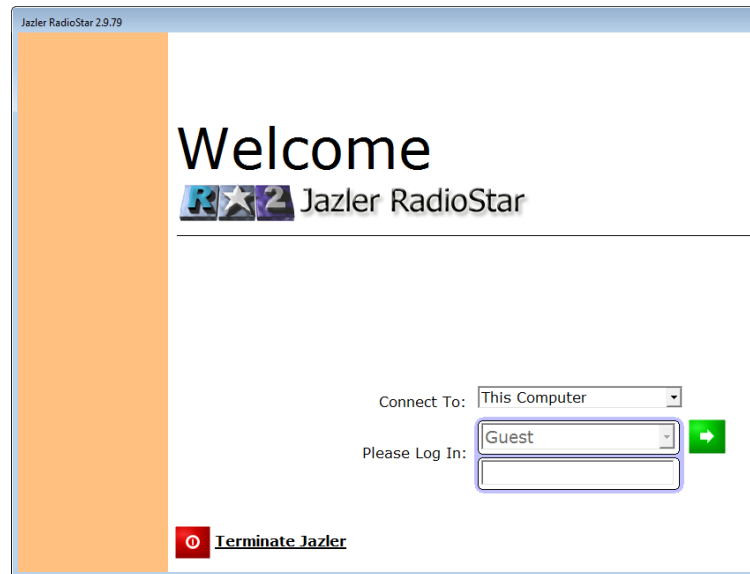


Image 18

#### **Further reading and Resources**

- <http://jazler.com/support/manuals.asp>